

DATE	
PROJECT	
TYPE	

FEATURES

- Strip retrofit or complete fixture
- Retrofit compatible with housing widths between 4 1/4 and 4 3/8
- Two 8' StarStrips can operate on 1 driver for tandem fixtures or continuous row applications
- 4' and 8' individual units
- Two standard lumen packages
- Efficacy up to 166 LPW
- 2.5 MacAdam ellipse binning
- Soft diffuse lighting
- Approved for dry and damp locations
- 5 year warranty
- Made in the USA



SPECIFICATIONS

PERFORMANCE (STANDARD OUTPUT, CRI 80+)			
Model	Lumens	Watts	LPW
SSx-4S-35K	3,221	22.6	142.8
SSx-4S-40K	3,349	22.7	147.4
SSx-4S-50K	3,606	22.7	158.6
SSx-8S-35K	6,656	44.9	148.2
SSx-8S-40K	6,911	45.6	151.5
SSx-8S-50K	7,424	45.4	163.4
SSx-16S-35K	13,703	86.1	159.1
SSx-16S-40K	13,907	86.2	161.4
SSx-16S-50K	14,316	86.2	166.1

*Bold indicates DLC Premium 4.2 Listed

PERFORMANCE (HIGH OUTPUT, CRI 80+)			
Model	Lumens	Watts	LPW
SSx-8H-35K	13,525	94.3	143.4
SSx-8H-40K	13,692	94.2	145.3
SSx-8H-50K	14,025	94.0	149.2

ELECTRICAL	
Input Voltage	U: 120-277 Vac
Hertz	50/60
Input Current	SSx - 4S: .29 - .13A SSx - 8S: .56 - .24A SSx - 8H: .77 - .33A SSx - 16S: .77 - .33A
Operating Temp.	-40°C to +50°C -40°F to +122°F
Power Factor	> 0.96
THD	< 12%

ORDERING INFORMATION

SERIES	LENGTH	COLOR TEMP.	FINISH		
SSR = StarStrip Retrofit SSF = StarStrip Fixture	4S = 4' Std Output 8S = 8' Std Output 8H = 8' High Output 16S = (2) 8' Std Output, (1) Driver	35K = 3500K 40K = 4000K 50K = 5000K	PW = Powdercoat White PO = Powdercoat Other		
WIRING OPTIONS	MOUNTING ACC.	OPTIONS	DIMMING OPTIONS	VOLTAGE	PLUG
FC = Feed Conduit (Through Wire) ECTW05 = Cord, Top Exit, White 5' ECTW10 = Cord, Top Exit, White 10' ECTB05 = Cord, Top Exit, Black 5' ECTB10 = Cord, Top Exit, Black 10' ECEW05 = Cord, End Exit, White 5' ECEW10 = Cord, End Exit, White 10' ECEB05 = Cord, End Exit, Black 5' ECEB10 = Cord, End Exit, Black 10'	SM = Surface Mount P05 = Universal Yoke and Toggle Kit 5' P10 = Universal Yoke and Toggle Kit 10'	NS = No Sensor MCE = Microwave, Internal MS = Motion Sensor, End Mounted DME = Daylight/Motion, End Mounted B60A = Battery Backup 6 Watt w/ Unswitched Line B10A = Battery Backup 10 Watt w/ Unswitched Line B06B = Battery Backup 6 Watt w/ Night Light Option B10B = Battery Backup 10 Watt w/ Night Light Option NL = Night Light without Battery Backup	ND = No Dimming AD = 0-10V Dimming	U = 120-277	PN = No Plug P1 = L5-15p P2 = L6-15p P3 = L7-15p

Example: **SSR-8S-40K-PW-FC-SM-NS-AD-U-PN**

See website for accessories page

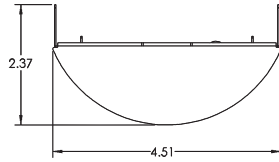
StarStrip™

CONSTRUCTION

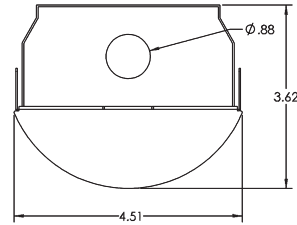
VARIATIONS

Model	Nominal Length	Luminaire Length	Weight (SSR)	Weight (SSF)
SSx-4	4 ft.	48.0" (1,219mm)	6 lbs. max (2.7kg)	9 lbs. max (4.1kg)
SSx-8	8 ft.	96.0" (2,348mm)	12 lbs. max (5.4kg)	18 lbs. max (8.2kg)
SSx-16	16 ft.	192.0" (4,877mm)	24 lbs. max (10.8kg)	35 lbs. max (16.4kg)

RETROFIT



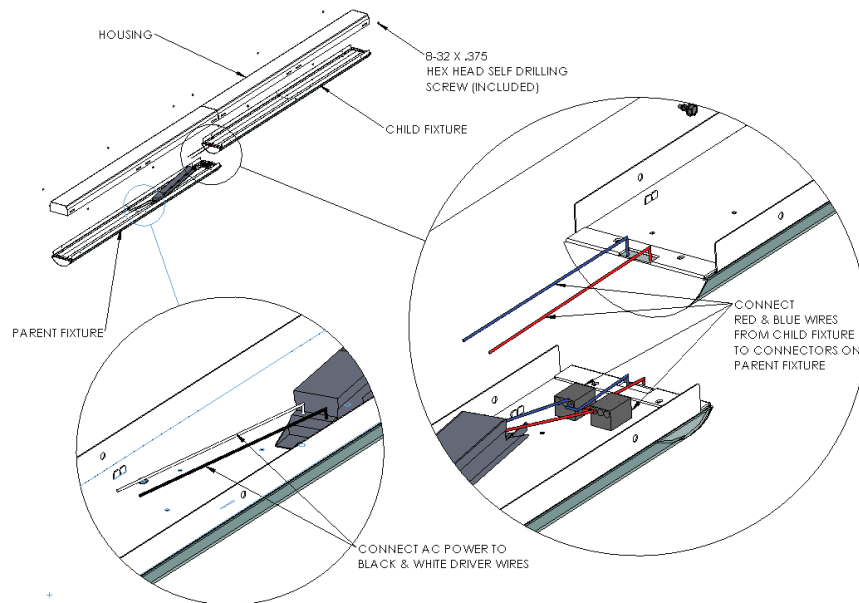
FIXTURE



MATERIALS

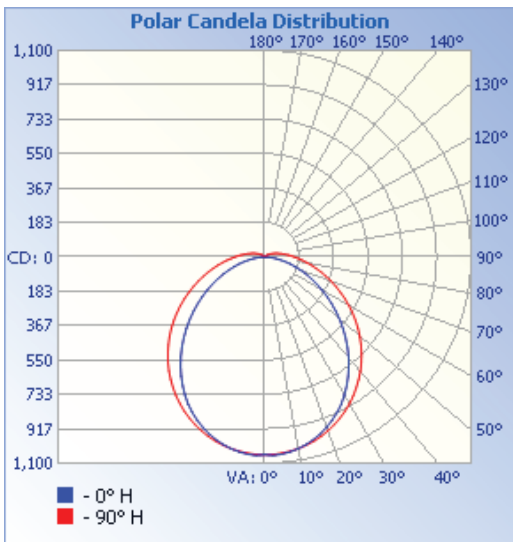
Housing	22 Ga. C.R.S.
Finish	White Powdercoat
Lens Cover	Frosted Acrylic (Impact Resistant)

SSx-16 CONFIGURATION



PHOTOMETRICS: SSx-4S-35K

POLAR CANDELA DISTRIBUTION



ISOFOOTCANDLE PLOT

