

STARTEK Lighting America

1960 Swanson Ct, Unit C Gurnee, IL 60031 • 877.782.7835



California Grocery Overview: StarPower Link Series Fixtures Illuminate Large Store Chain!

STARTEK LIGHTING AMERICA, Libertyville, Illinois, manufacturers commercial LED fixtures. The StarPower linear linking system is ideal for grocery stores and retail locations offers a wide choice of color temperature and lumen package options for tremendous energy savings.

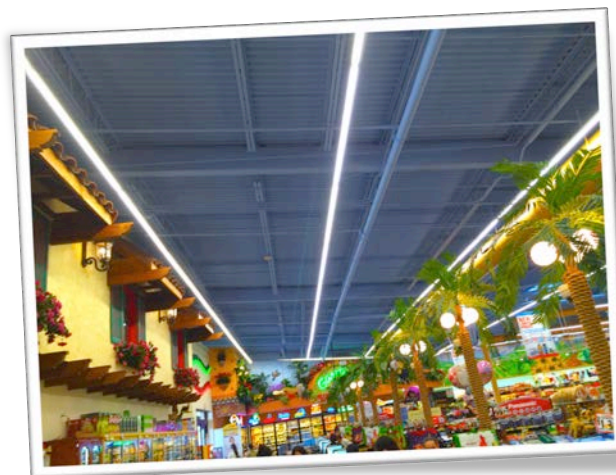
All fixtures are ETL Listed and DLC Approved for state utility rebates. Fixtures carry a full Five Year Warranty.

The StarPower Link System requires only one power drop for long continuous runs. Each fixture has an internal driver and independently carries branch circuit voltage and 0-10V dimming to the next fixture. Simple install or removal of any fixture can be done in minutes. Comes standard with highly diffused lens cover.

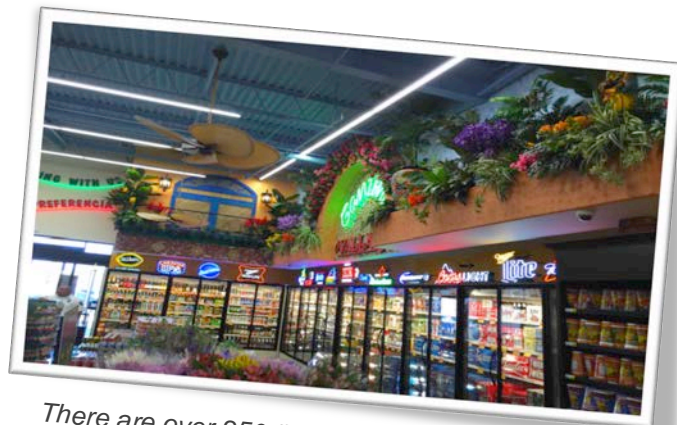
Specification Information:

8' SPN 4000K 11,815 Lumens 91.8 Watts 129 LPW
91.6" Length x 3.2" Width x 3.1" Height
14 Pounds Max 120-277 Vac 0-10V Dimming
Fixture can be Pendant (Cable, Chain or Rod) or Surface Mounted
Suitable for Damp and Dry Locations
Clear Anodize Finish

StarTek Lighting America
Made in the USA



The StarPower Link Series (LS) will allow continuous runs of up to 200 feet @277v. This simple system features Molex connectors for easy install with a slide-over sleeve to assure straight row alignment.



There are over 250 fixtures in the 40,000sf store that has a ceiling height of 18' and fixture hang height by cable suspension at 14'.



High Performance/Top Quality

StarPower Link Series linear fixtures come in a variety of performance packages that include standard and high output. See website for specification and photometric file information.

Easy Install System with One Drop

StarTek's unique system featuring a five-pin, Molex quick link connection allows for fast, easy install. The system requires a single power drop for long, continuous runs (200ft @ 277V or 100ft @ 120V).



Slide-Over Sleeve for Alignment

The StarPower slide-over sleeve joins the fixtures for perfect, accurate row alignment. Sleeve not required for surface mounting applications.

STARTEK LIGHTING AMERICA

1960 Swanson Ct

Gurnee, Illinois 60031

877.782.7835

www.starteklightingamerica.com

PROUDLY MADE in the U.S.A.

